



Diamond Wire Saw

DWS



SUBSEA CUTTER

AUTO FEED SYSTEM AND HYDRODYNAMIC DESIGN

DESCRIPTION

The Wachs Subsea Diamond Wire Saws are designed for underwater cutting of horizontal or vertical pipe, casings and structure, with five models that cut from 4in to 84in O.D. (DN100-DN2100). Running on hydraulic power, the wire saw is controlled remotely using the Wachs Topside Control Panel (TCP), Wachs HPU with integrated TCP or by ROV control operable via zero leak hot stabs.

Wachs Diamond Wire Saws feature a unique hydrodynamic design that dramatically reduces centrifugal forces during operation, which means less power wasted in churning water and more power directed to cutting the workpiece.

SELF ADJUSTING AUTOFEED

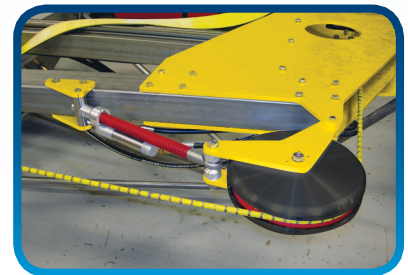
The Wachs Diamond Wire Saw features a unique self-adjusting autofeed system that controls wire bend and automatically matches the feed rate to the cutting rate. With the ability to adjust the feed until the cutting action catches up, Wachs DWS delivers more efficient cutting action with enhanced operator safety and greatly extended wire life.

SYNCHRONIZED CLAMPING

In addition, the saw is equipped with a fully adjustable power clamping system, designed to grasp the workpiece more accurately with fewer contact pads. It features two synchronized hydraulically actuated clamping arms that pivot inward, providing easy and secure remote control mounting. Synchronized clamping arms ensure uniform, square and secure mounting and prevent damage to the arms from unequal forces. Because the machine mounts more accurately, less visual supervision is required.

WIRE SAW FEATURES

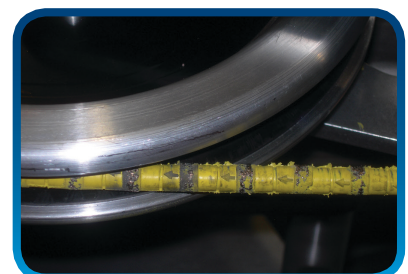
- Lightweight aluminum plate construction
- Five models cut from 4in to 84in O.D. (DN100-2100)
- Easily replaceable long life diamond wire cutting element
- Hydraulically operated synchronized clamping arms
- Self adjusting automatic feed system
- Overload clutch for bow damage prevention
- Corrosion resistant with anode protection
- Mounts vertically or horizontally



Self adjusting feed system controls wire bend and automatically matches the feed rate to the cutting rate.



Unique hydrodynamic design means less power wasted in churning water and more power directed to cutting the workpiece.



Diamond wire cutting element quickly and cleanly cuts pipe of varying material and thicknesses without stalling or binding due to compression of the workpiece.

WACHS SUBSEA LLC®

11050 West Little York, Building N • Houston, Texas 77041 • +1.713.983.0784 worldwide • +1.713.983.0703 fax
wachssubsea.com



Diamond Wire Saw

DWS

SPECIFICATIONS

System Function: Designed to cut submerged pipe, casing and structure of varying materials and thicknesses using a high speed rotating diamond wire loop cutting element

System Capacity: Five models designed to cut from 4in to 84in O.D. (DN100-2100)

Cutting Wire: Quick change continuous loop diamond wire cutting element

Cutting Wire Speed: Variable, 0-1,500 RPM

Drive Options: Hydraulic only

Power Requirements: Hydraulic requirements 20 GPM @ 2500 PSI (76 LPM @ 172 BAR) varies by model and application

Feed Method: Automatic self-adjusting feed control with screw drive and manual override

Feed Rate: Variable based on workpiece material and density

Construction: Lightweight aluminum plate construction, constant tension bow feed, three hydraulic drive circuits - cutting, feed, and clamp drive.

Finish: Corrosion resistant powder coated aluminum frame plates, black anodized aluminum select components, and stainless steel hardware

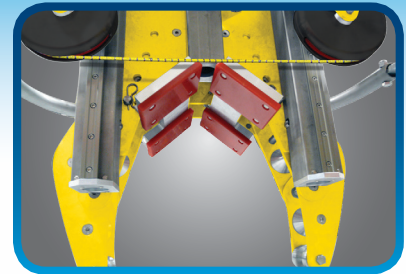
Clamping Pads: User replaceable crush resistant urethane clamping pads

Wire Guides: User replaceable durable urethane inserts

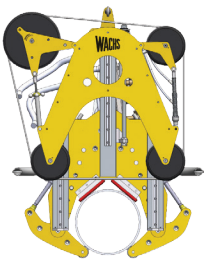
Included Accessories: Operating manual

DESIGN HIGHLIGHTS

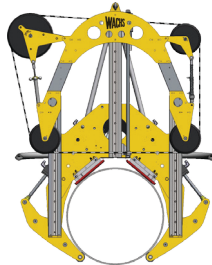
- Lightweight planetary feed drive
- Large diameter high contact area wire drive wheels
- Hydraulic wire drive motor w/overhung bearing support
- Lift interfaces for vertical or horizontal deployment
- Lightweight aluminum plate construction
- User replaceable clamp contact pads and wheel inserts
- Optional Wachs TCP Topside Control Panel



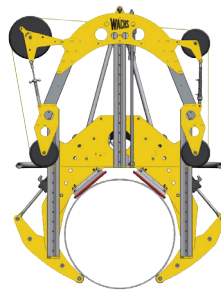
Fully adjustable power clamping system uses contact pads and two synchronized hydraulically actuated clamping arms that pivot inward to ensure uniform, square and secure clamping.



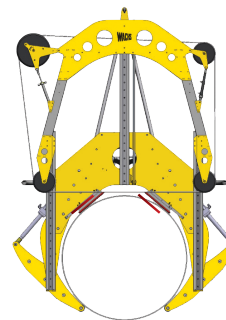
DWS 1604



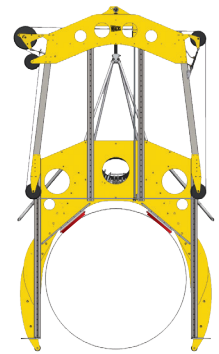
DWS 3012



DWS 3616



DWS 5230



DWS 8460

Model Number	DWS 1604	DWS 3012	DWS 3616	DWS 5230	DWS 8460
Maximum Pipe Capacity	16in (406mm)	30in (762mm)	36in (914mm)	52in (1321mm)	84in (2134mm)
Minimum Pipe Capacity	4in (102mm)	12in (305mm)	16in (406mm)	30in (762mm)	60in (1524mm)
Height	55in (1397mm)	82.5in (2096mm)	92.5in (2350mm)	127in (3226mm)	205in (5207mm)
Width	44in (1118mm)	63.75in (1619mm)	69.75in (1772mm)	87.25in (2216mm)	118.8in (3017mm)
Depth	28in (711mm)	30in (762mm)	32in (813mm)	43in (1092mm)	43in (1092mm)
Weight	730lbs (331Kg)	1000lbs (454Kg)	1200lbs (544Kg)	1600lbs (726Kg)	call
Product Part #	10-010-516	10-010-530	10-010-536	10-010-552	10-010-584
Replacement Wire	09-071-710	08-011-710	08-051-710	08-021-710	08-031-710

All dimensions shown for pipe diameters are US nominal diameters in inches, plus metric nominal diameters (DN) in parenthesis. Tubing and solid diameters if shown are actual US inches plus metric millimeter equivalents.

**CONTACT US
FOR A DEMONSTRATION
OR QUOTATION**

E-mail: info@wachssubsea.com

Telephone: +1.713.983.0784

In USA & Canada: +1.800.323.8185

Fax: +1.713.983.0703

Visit our website: wachssubsea.com